

# GENERAL INFORMATION FOR TIMETABLE 2023

## C-OSS NEWSLETTER

26 January 2022



Co-financed by the European Union  
Connecting Europe Facility

[www.rfc7.com](http://www.rfc7.com) | [coss@rfc7.com](mailto:coss@rfc7.com)

## Content

<b>General basic information</b>	<b>3</b>
<b>Corridor Information Document</b>	<b>3</b>
<b>The C-OSS</b>	<b>4</b>
<b>Pre-arranged Paths offer for timetable 2023</b>	<b>5</b>
<b>Process steps for PaP requests with non-available days</b>	<b>6</b>
<b>Information about planned major capacity restrictions</b>	<b>7</b>
<b>Správa železnic network</b>	<b>7</b>
<b>GYSEV network</b>	<b>8</b>
<b>CFR network</b>	<b>10</b>
<b>NRIC network</b>	<b>11</b>

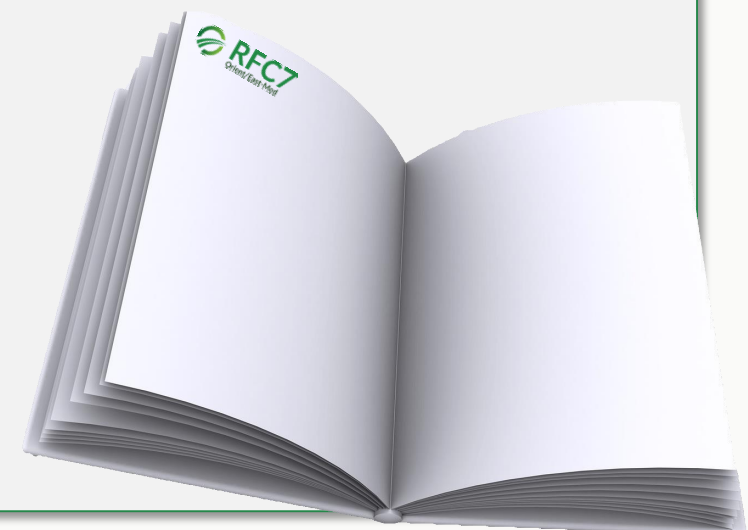
### CORRIDOR INFORMATION DOCUMENT – OUR NETWORK STATEMENT

The Corridor Information Document (CID) provides all information in relation with Rail Freight Corridor Orient/East-Med such as legal background, infrastructure characteristics, access conditions, description of terminals, capacity and traffic management process.

The CID is divided into the following sections:

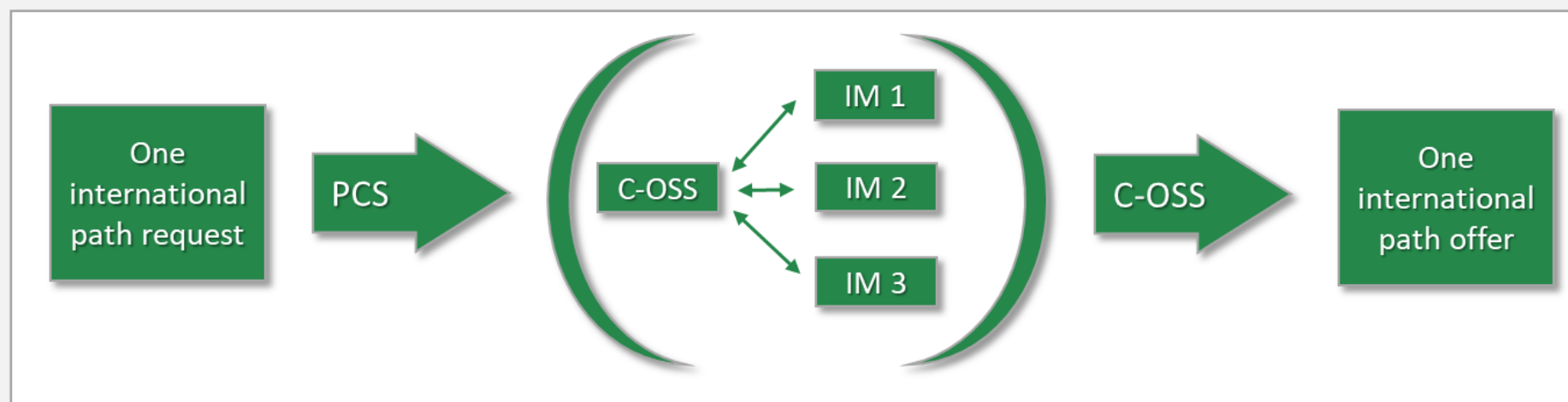
- ☐ Section 1 - Generalities
- ☐ Section 2 - Network Statement Excerpts
- ☐ Section 3 - Terminal Information
- ☐ Section 4 - Procedures for Capacity and Traffic Management
- ☐ Annexes
  - Implementation Plan
  - Transport Market Study
  - Investment Plan
  - Framework for Capacity Allocation
  - C-OSS Operational Rules

The CID is available here:  
<https://www.rfc7.eu/corridor-information-document>



### CORRIDOR ONE-STOP SHOP (C-OSS)

- 🔄 Single contact
  - ✓ C-OSS presents **one single place** allowing Applicants to request and receive answers regarding infrastructure capacity for international freight trains crossing at least one border along the Corridor.
- 🔄 Single coordination
  - ✓ C-OSS **coordinates** the national Infrastructure Managers and Allocation Bodies, to allow you a **simple and fast booking** of international paths for freight trains using an exclusive international IT tool: **Path Coordination System - PCS** (<https://pcs.rne.eu/>)
  - ✓ C-OSS publishes **Pre-arranged Path (PaP)** catalogue for your annual timetable planning 11 months before timetable change and Reserve **Capacity (RC)** for interim needs till 30 days before operation.
  - ✓ C-OSS also deals with feeder and outflow or modified path requests, providing **flexible offer**.
- 🔄 Single allocation decision
  - ✓ C-OSS applies one **internationally harmonized** allocation rule and act on behalf of all IMs along the Corridor.



# PRE-ARRANGED PATHS OFFER FOR TIMETABLE 2023

## What are the Pre-arranged Paths (PaPs)?

PaPs are pre-constructed **international train paths** offered for the annual timetable.

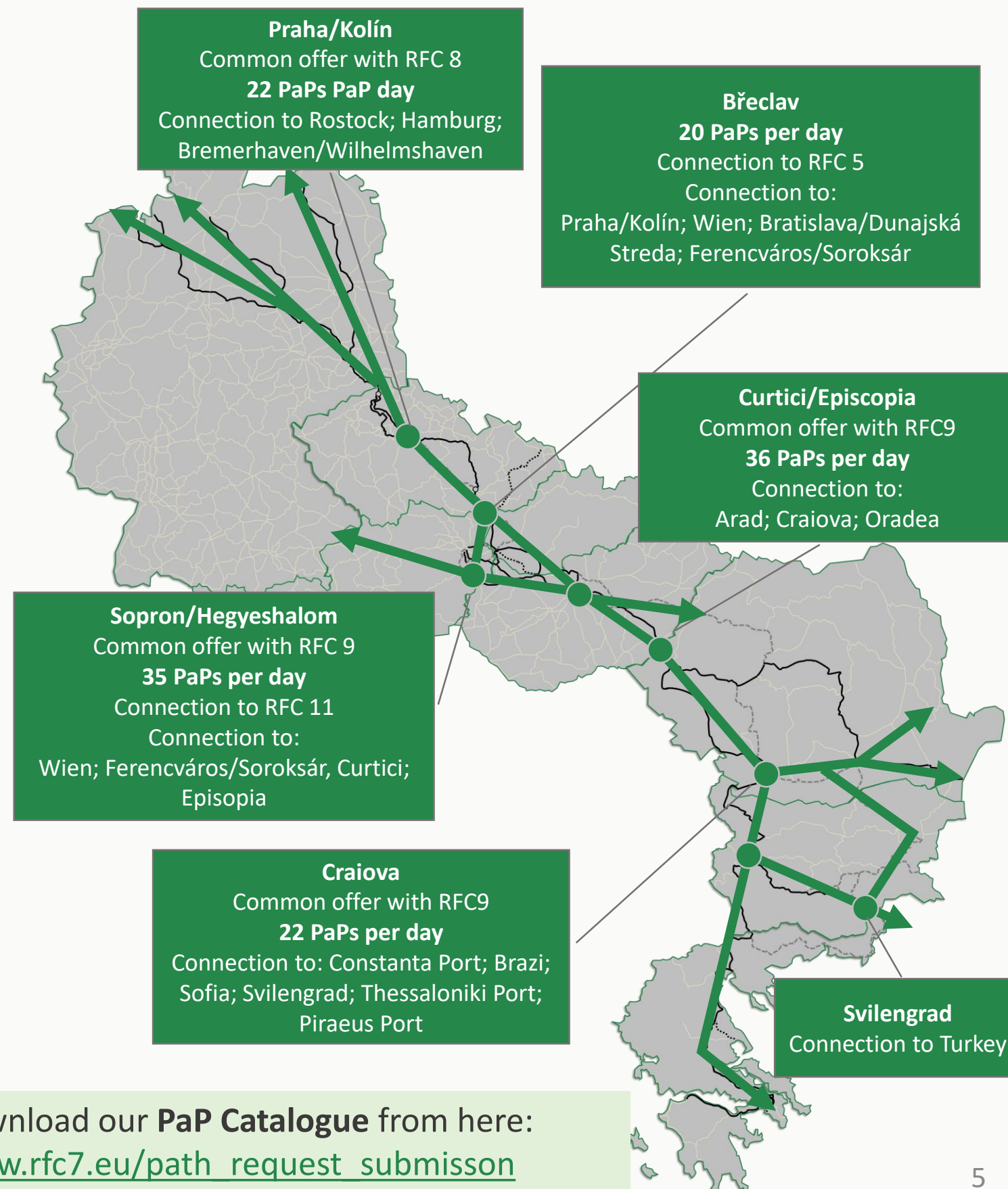
RFC OEM PaPs consist of **harmonized border-crossings** with optimal travel times between the borders.

PaPs are published **11 months** before the timetable change (X-11) and defined according to **specific parameters** (planned speed, maximum length, weight and profile).

PaPs are **protected** in the IMs planning tools against **unilateral modifications** resulting from other capacity requests or lately announced capacity restrictions.

PaPs are displayed in a **transparent way** in PCS and shall be **allocated exclusively** via C-OSS (single allocation decision).

Applicants can request PaPs up to **eight months** before the start of the related timetable year (X-8) by using PCS as a booking tool.



You may download our **PaP Catalogue** from here:  
[https://www.rfc7.eu/path\\_request\\_submission](https://www.rfc7.eu/path_request_submission)



PaPs in PCS are displayed with full calendar, but the availability of running days is according to the list of planned capacity restrictions published on 20<sup>th</sup> January 2022.

Exception: PaPs on DB Netz, and ÖBB network are published with available days only.

Detailed information on planned infrastructure works, total closures and alternative routes is available on the corridor's website (<https://www.rfc7.eu/track-possessions>)

### Process steps:

- 1) Customer requests PaPs selecting any calendar days.
- 2) During the pre-booking phase the C-OSS reserves requested PaPs
- 3) The timetable offer from the IM shall be divided into the following subpaths:
  - a) Days marked as available – PaP offer
  - b) Days marked as non-available – tailor-made offer
  - c) Days removed by the IM – TCR was published with no alternative route option
- 4) On SZCZ network alternative PaPs are published at modernization of line Česká Třebová – Brno **to ensure smooth trains running on PaPs during the whole timetable year.**

**Feel free to contact your C-OSS in case you need assistance!**

**UPDATED: 26-01-2022**



**Daily closure between Bad Schandau GR – Dolní Žleb**  
**(8:50 – 16:40)**  
From 12-12-2022 till 14-02-2023  
**Partial track closure between Děčín-Prostřední Žleb – Děčín hl.n.**  
From 03-03-2023 till 30-06-2023

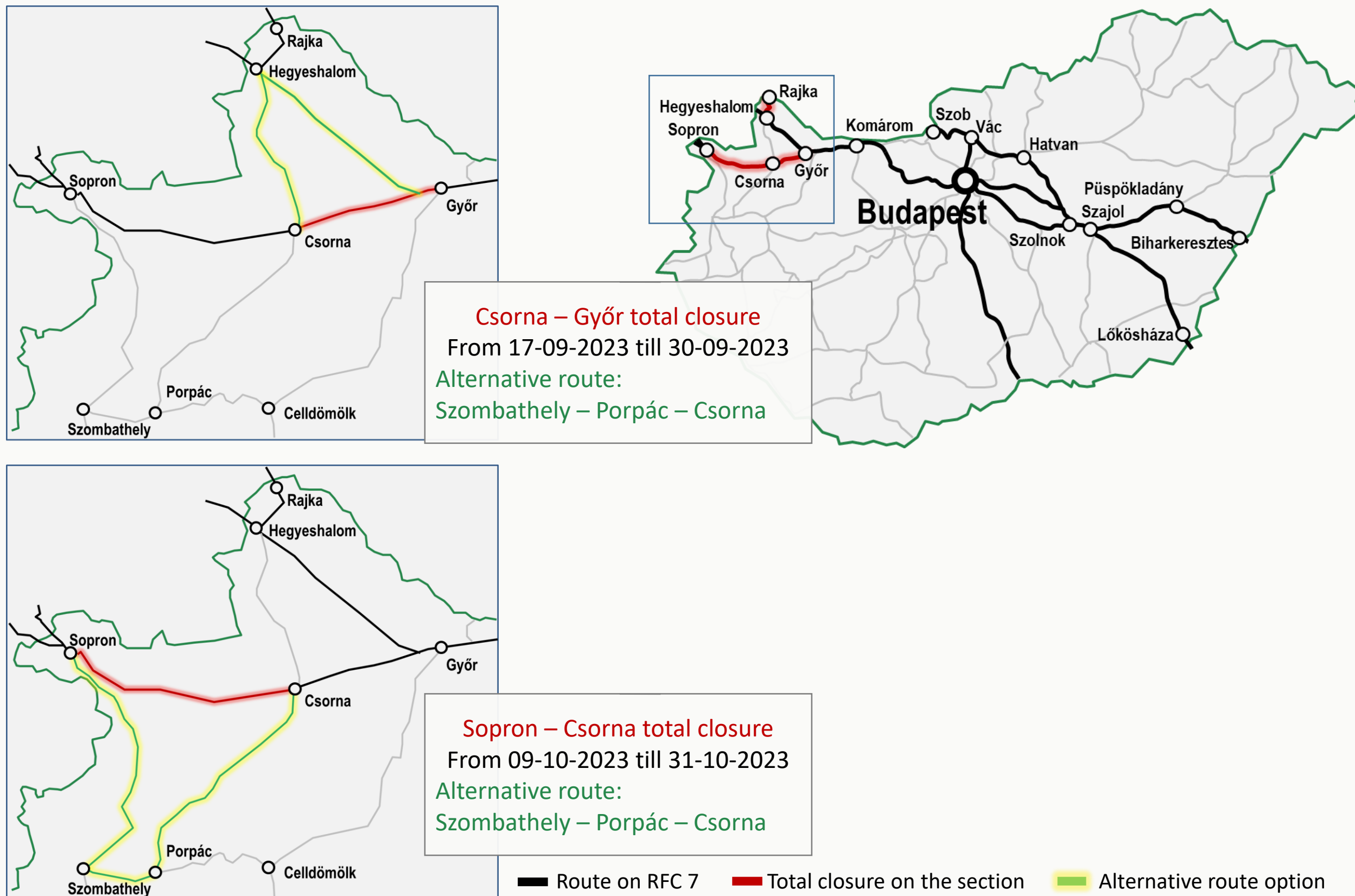
**Modernization of line Česká Třebová – Brno**  
2022 – 2023

**Greatly reduced capacity on the section**  
Alternative PaP offer (11-12-2022 – 30-06-2023):  
Česká Třebová – Olomouc – Přerov – Břeclav (P/C 80/410)  
Kolín – Kutna Hora – Havlíčkův Brod – Brno (P/C 57/381)

■ Route on RFC 7    ■ Alternative route option    ■ Reduced capacity on the section

# PLANNED MAJOR CAPACITY RESTRICTIONS ON GYSEV NETWORK – TT2023

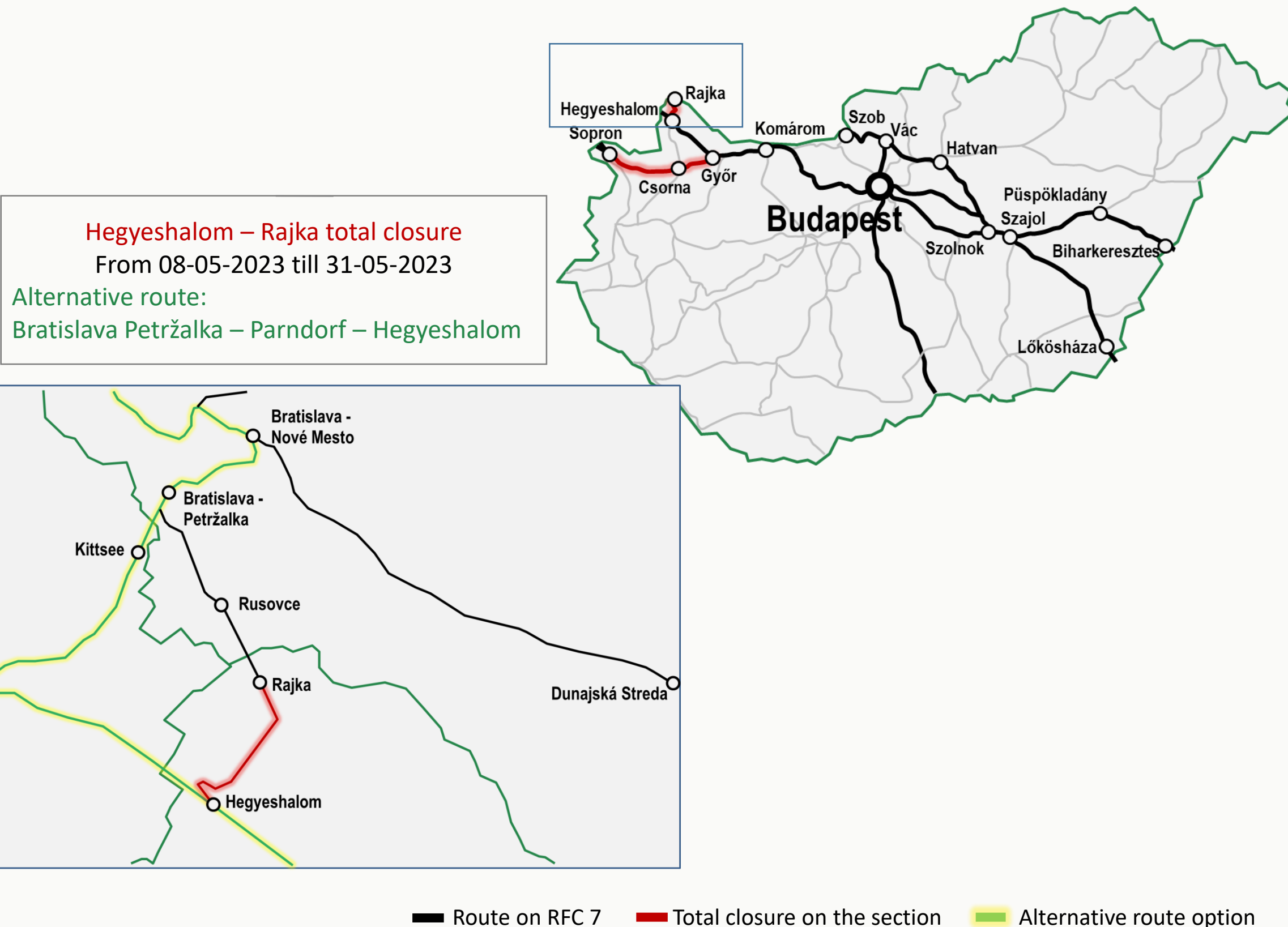
UPDATED: 25-01-2022





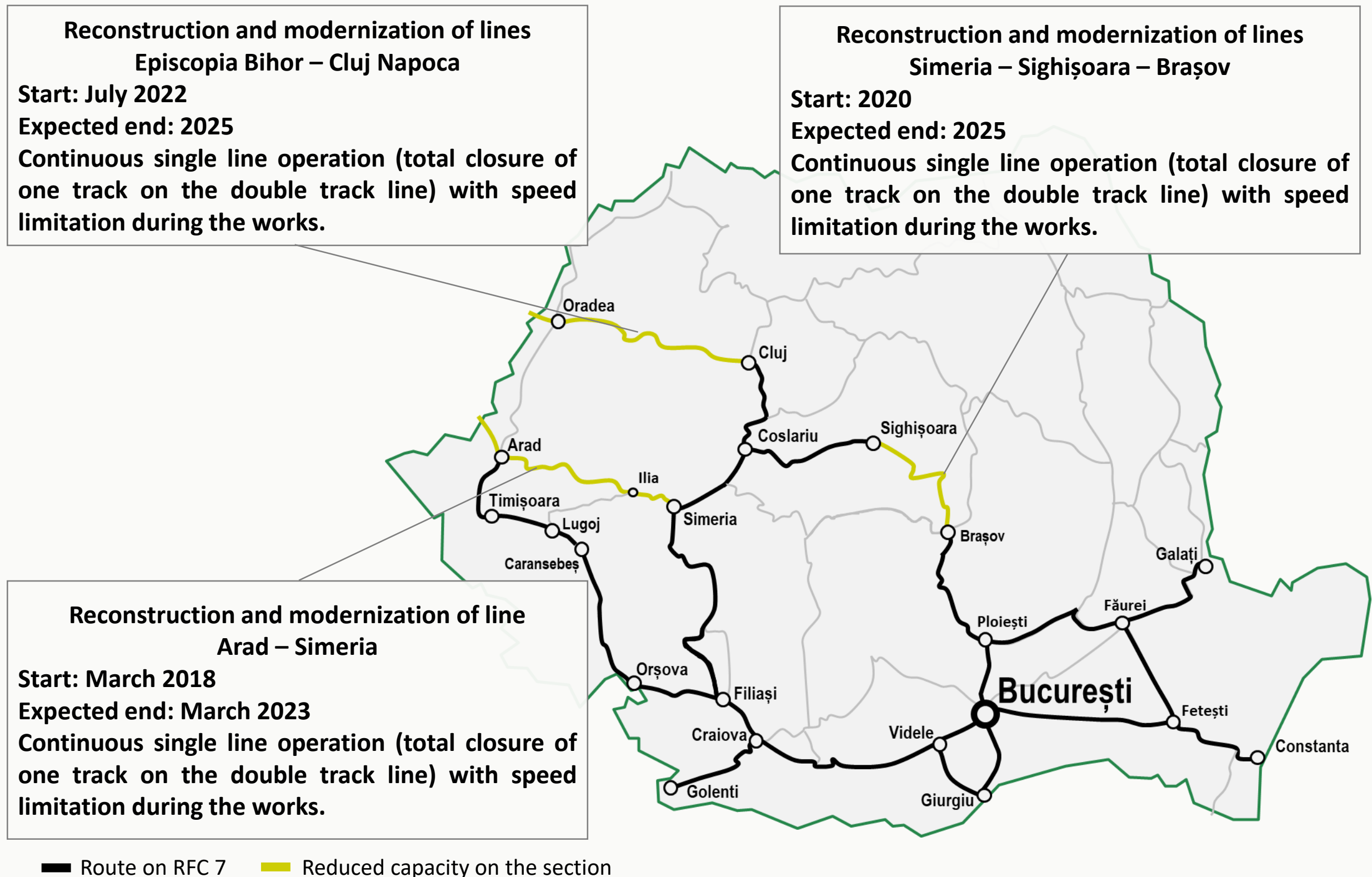
# PLANNED MAJOR CAPACITY RESTRICTIONS ON GYSEV NETWORK – TT2023

UPDATED: 25-01-2022



# PLANNED MAJOR CAPACITY RESTRICTIONS ON CFR NETWORK – TT2023

**UPDATED: 20-01-2022**



# PLANNED MAJOR CAPACITY RESTRICTIONS ON NRIC NETWORK – TT2023

**UPDATED: 20-01-2022**



## **Nova Zagora – Simeonovgrad total closure**

From 01-04-2023 till 31-05-2023

Alternative route:

Nova Zagora – Stara Zagora – Dimitrovgrad  
- Simeonovgrad

## **Jambol – Zimnitsa total closure**

From 01-09-2023 till 30-10-2023

Alternative route:

Stara Zagora – Tulovo – Zimnitsa  
(P/C 70/400, 550m)

## **Obraztsov chiflik total closure**

From 20-04-2023 till 25-04-2023

## **Samuil total closure**

From 20-04-2023 till 25-04-2023

From 15-06-2023 till 20-06-2023

## **Vetovo total closure**

From 20-06-2023 till 26-06-2023

## **Prostorno total closure**

From 29-09-2023 till 04-10-2023

## **Visoka poliana total closure**

From 29-09-2023 till 04-10-2023

Alternative route:

Ruse – Gorna Oryahovica –  
Kaspichan/Komunari (P/C 70/400, 550m)

## **Junak – Sindel Razpred. total closure**

From 25-08-2023 till 15-09-2023

Alternative route:

Kaspichan – Shumen – Komunari (P/C  
70/400, 550m)

— Route on RFC 7    — Total closure on the section    — Alternative route option

# PLANNED MAJOR CAPACITY RESTRICTIONS ON NRIC NETWORK – TT2023

**UPDATED: 20-01-2022**

**Vidin tovarna – Brusartsi total closure**  
From 01-08-2023 till 10-08-2023  
**No capacity**

**Blagoevgrad – Kresna total closure**  
From 01-08-2023 till 20-08-2023  
**No capacity**

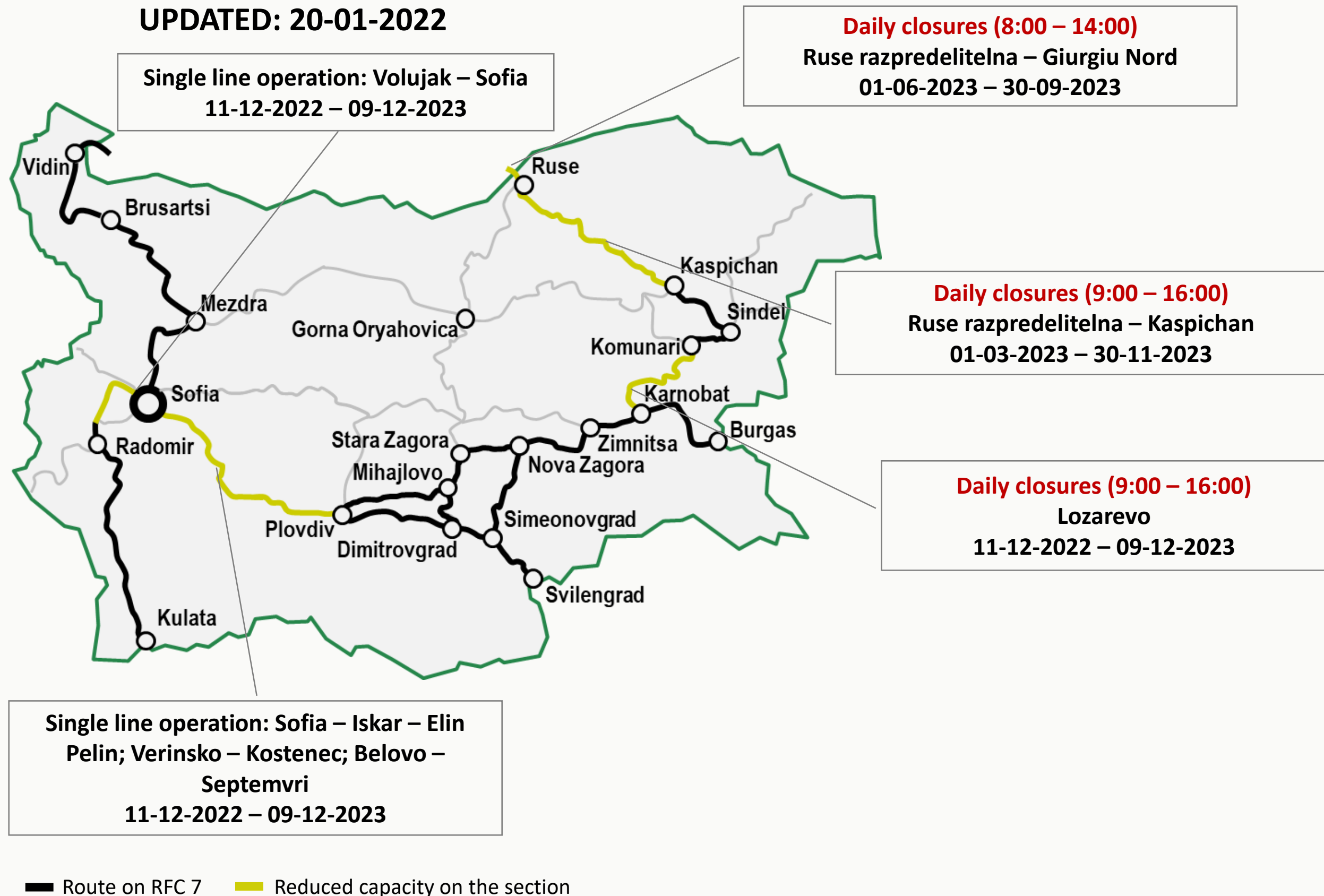
**Orizovo – Mihailovo total closure**  
From 15-06-2023 till 15-10-2023  
**Alternative route:**  
Plovdiv – Dimitrovgrad - Mihailovo

**Mihailovo - Mericleri total closure**  
From 01-03-2023 till 15-03-2023  
**Alternative route:**  
Simeonovgrad – Nova Zagora



# PLANNED MAJOR CAPACITY RESTRICTIONS ON NRIC NETWORK – TT2023

**UPDATED: 20-01-2022**





## VIDEO TUTORIAL

**You may watch detailed video guides about PCS and ordering PaPs here:**

**<https://cms.rne.eu/pcs/pcs-documentation-0>**

## C-OSS SUPPORT

**Should you need assistance any time, do not hesitate to contact your C-OSS Manager!**

**Mr. József Ádám Balogh**

**E-mail: [coss@rfc7.com](mailto:coss@rfc7.com)**

**Phone: +36 30 696 8555**