

DE – CZ – AT – SK – HU – RO – BG – EL

RFC7

Orient/East-Med

Task force report

Bad Schandau - Děčín

Task force



Participants

- Task force leader IM: DB Netz AG
- Participating IMs: Správa železnic
- Participating RUs: DB Cargo, HSL Logistics, IDS
Cargo, Metrans, CD Cargo, ...

Figures

Yearly traffic flow per direction



Source:
National system
(Freight Traffic)

Sum N-S

Sum S-N

Lineáris (Sum N-S)

Lineáris (Sum S-N)

— 2023: 01 January – 22 September

Timeline

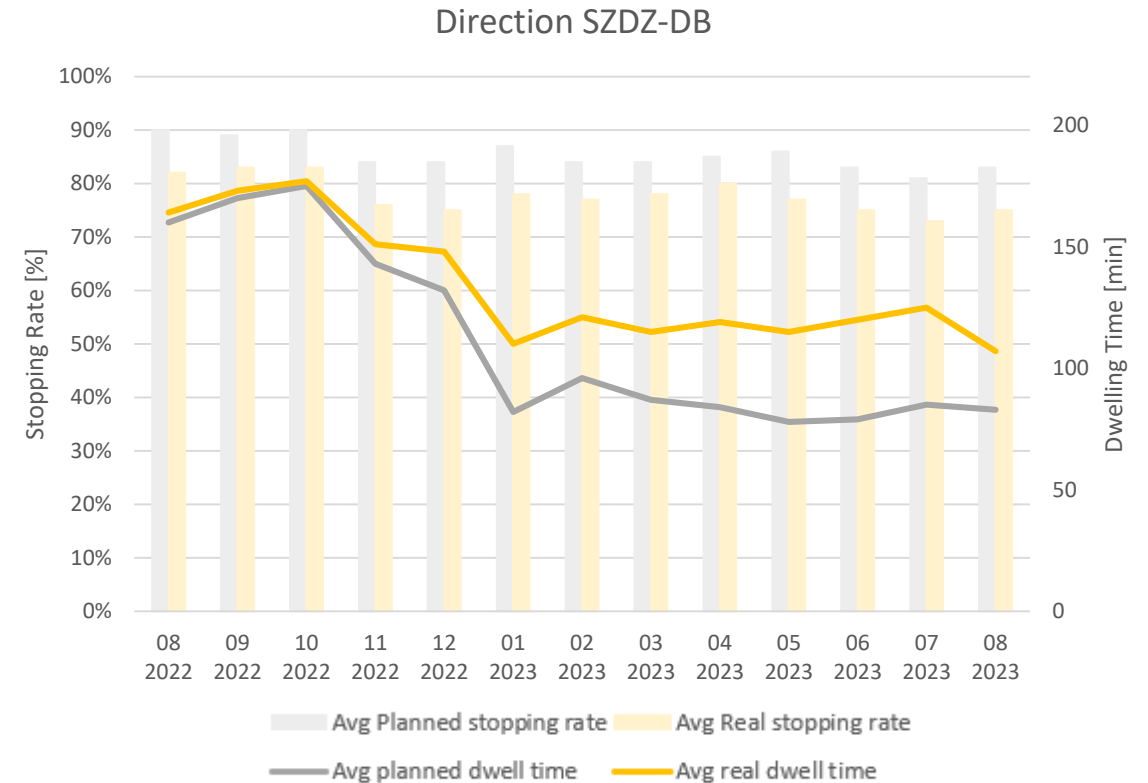
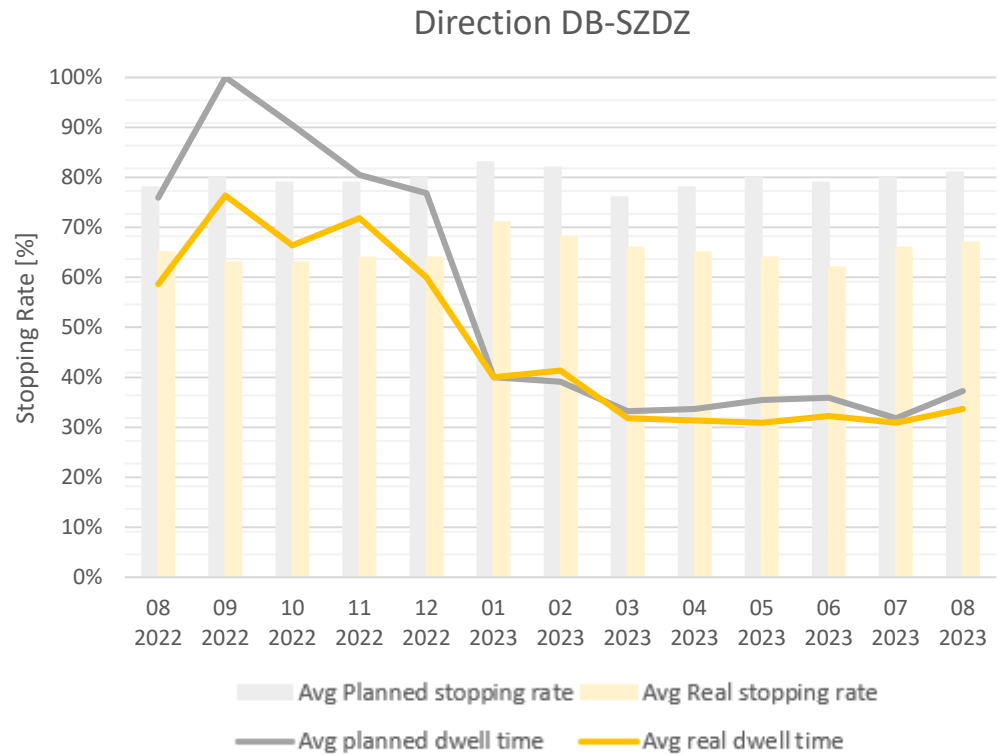


- Quality Circle Operation on 07. November 2023

Evolution of dwelling times



Source:
RNE



Findings:

- Dwelling Times in both direction remain on high level



Identified issues



IM related

- Language barrier
- Continuing construction works
- Validity of foreign certificates

RU related

- Missing coordination and poor quality of path requests (missing information on e.g. border processes, train numbers)
- Language requirements

Next steps



- Introducing cross-border coordinator
- Making minimum criteria for path requests mandatory by defining them in cross-border agreement
- Telcos 3x per year with RU and SZ



DE – CZ – AT – SK – HU – RO – BG – EL

RFC7

Orient/East-Med

Thank you for your kind attention!