



DE – CZ – AT – SK – HU – RO – BG – EL

RFC7

Orient/East-Med

Task force report

Curtici – Lőkösháza

CFR - MÁV

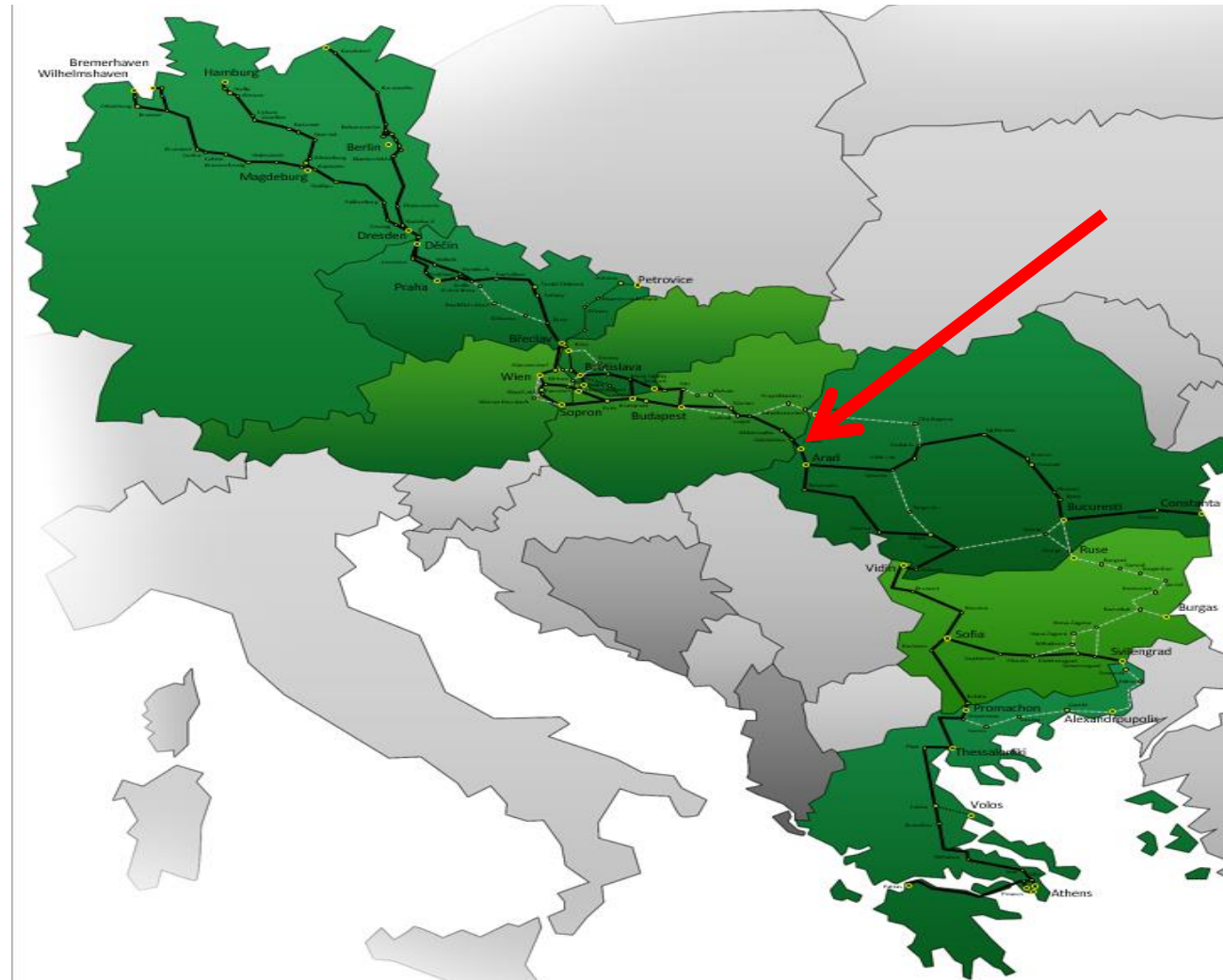


1
10:04



Co-financed by the European Union
Connecting Europe Facility

Location



Task force



Participants

- Task force leader IM: CFR
- Participating IMs: CFR and MÁV
- Participating RUs: CFR Marfa, Grup Feroviar Român, DB Cargo România, Rail Cargo Carrier România, Unicom Tranzit, Vest Trans Rail, Cargotrans Vagon, CER Fersped, PSP România, LTE România, Tim Rail Cargo, Fox Rail, Rail Cargo Carrier, DB Cargo Hungária, Train Hungary, CER Co, LTE Hungary, GySEV Cargo, PSZ, PSP, Rail Cargo Hungary.

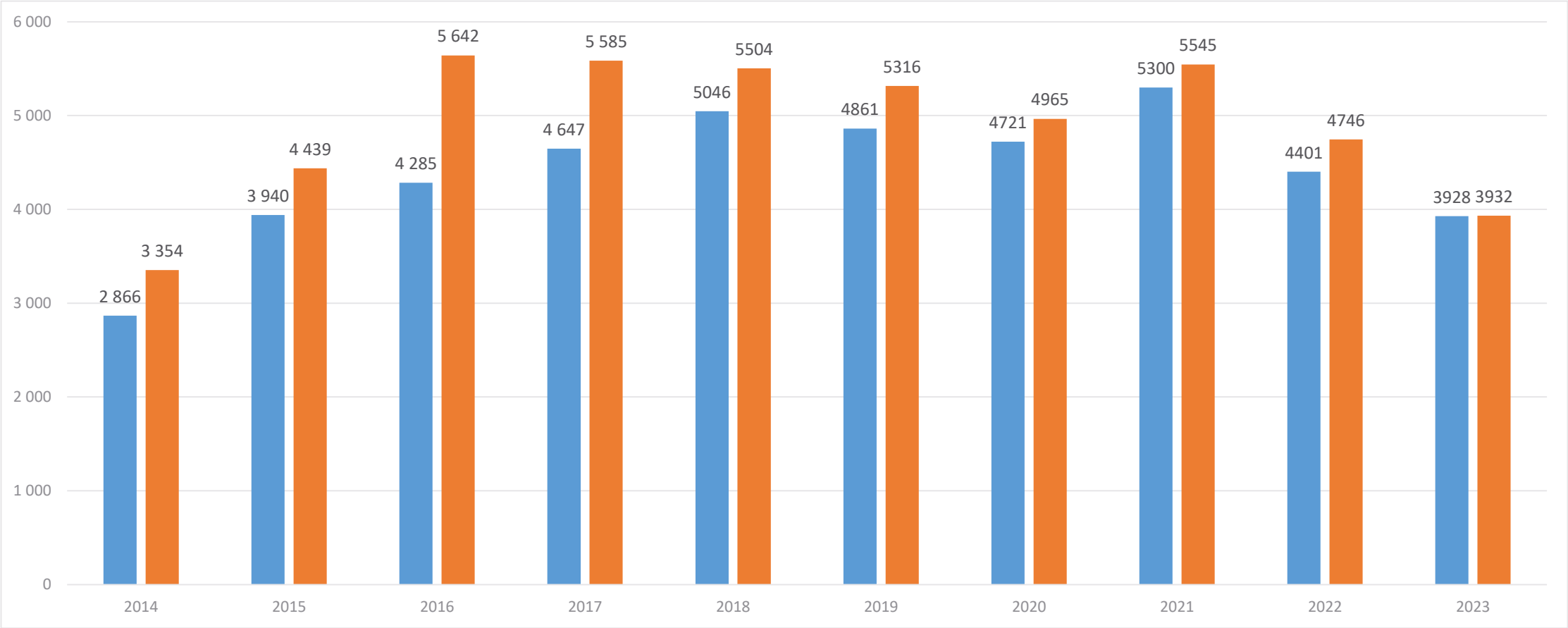


Yearly traffic flows per directions (minutes)

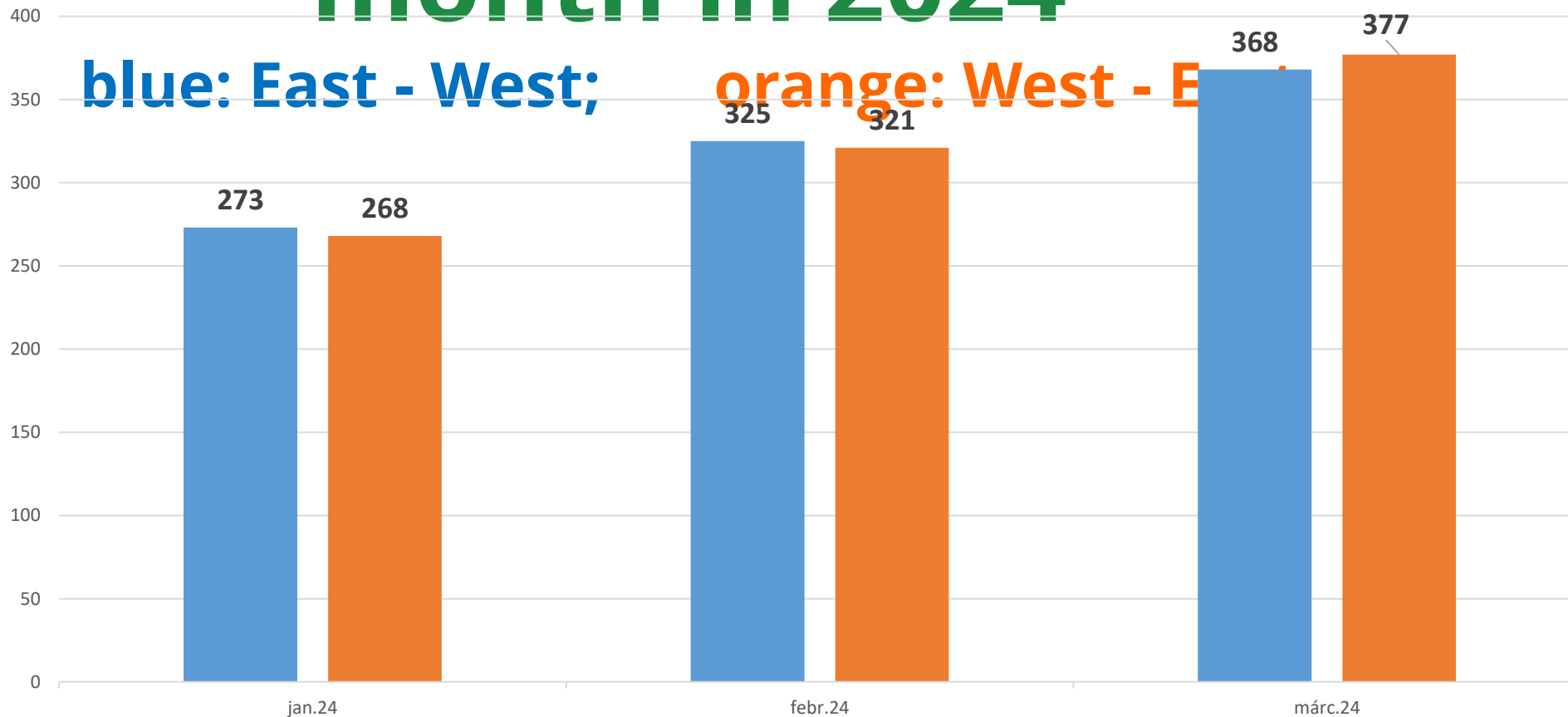


blue: East - West; orange: West – East. There were total closures: 28/08 – 9/12/2023 from 23.30 – 3.20

Source: National system



Number of trains per month in 2024



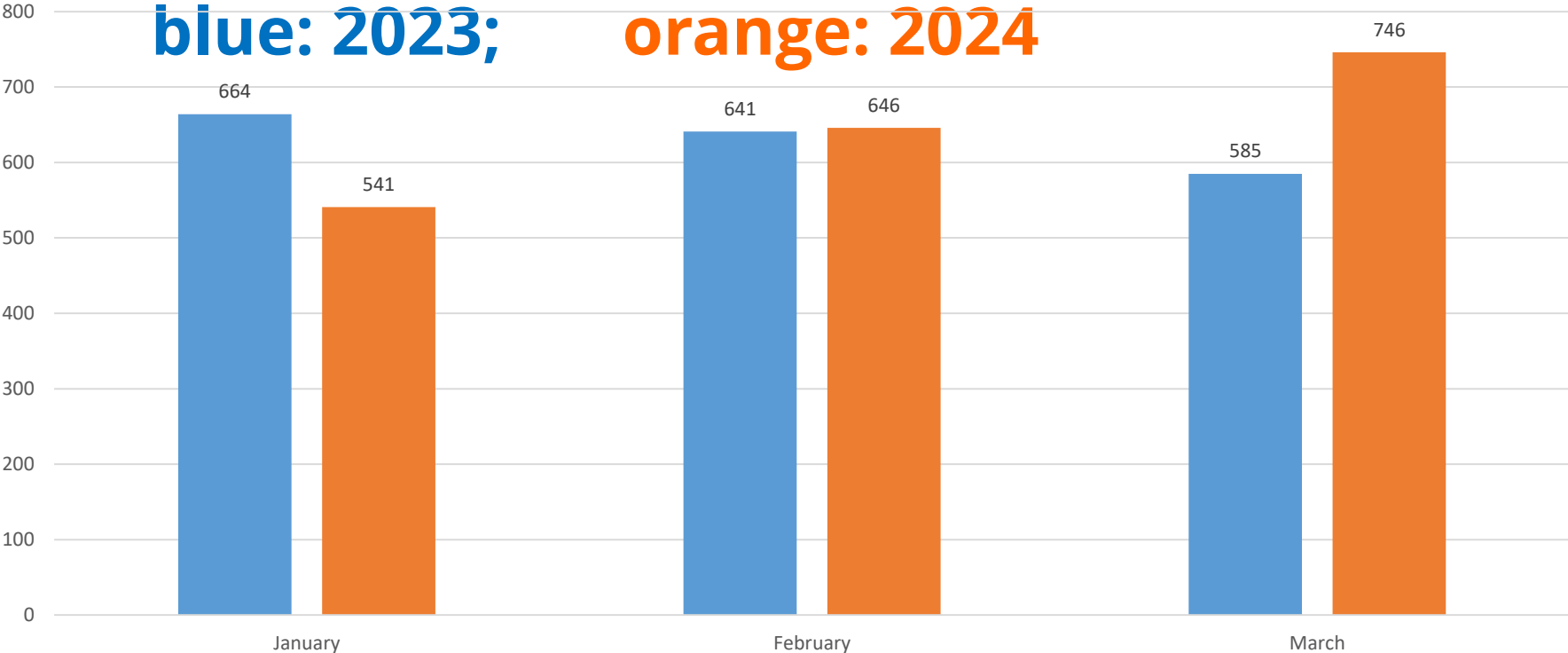
Source: domestic tool



5
10:04

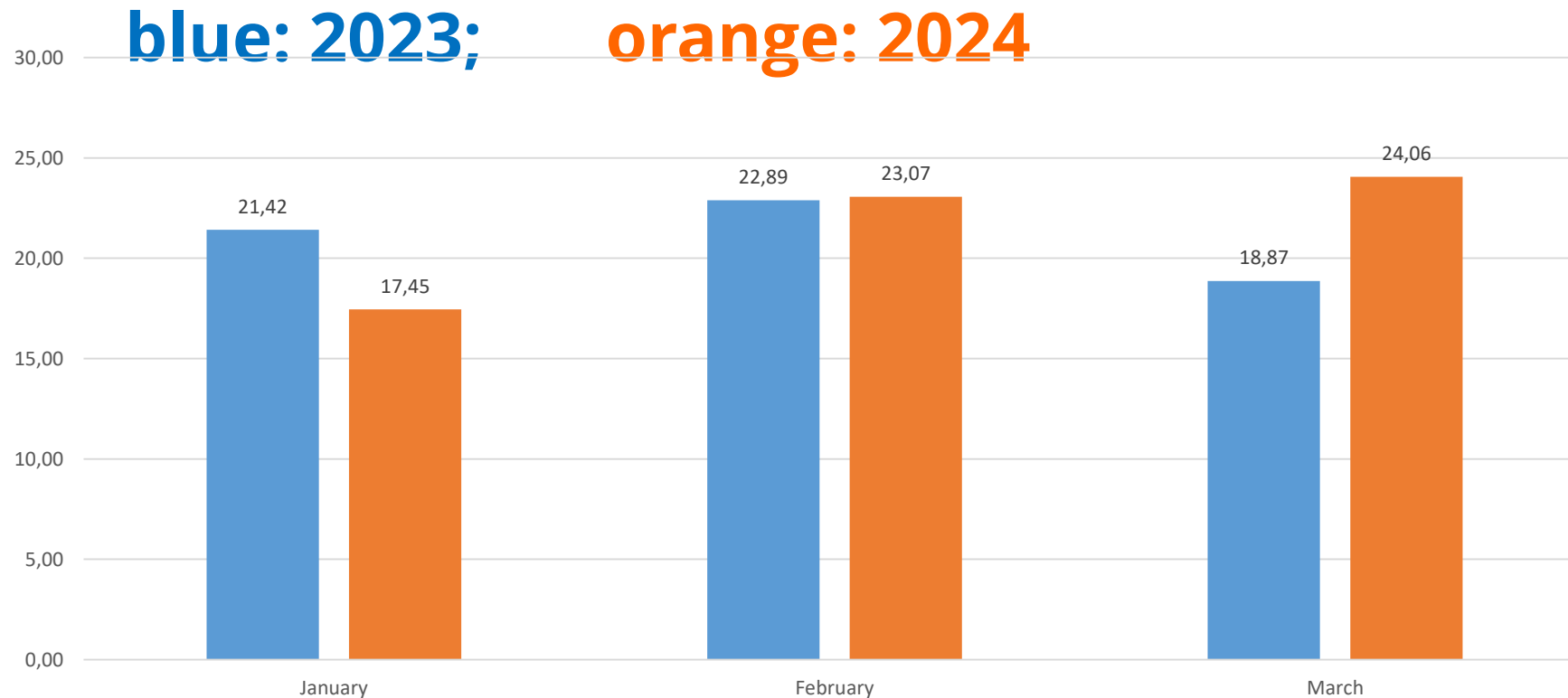


Number of trains per month



Source: domestic tool

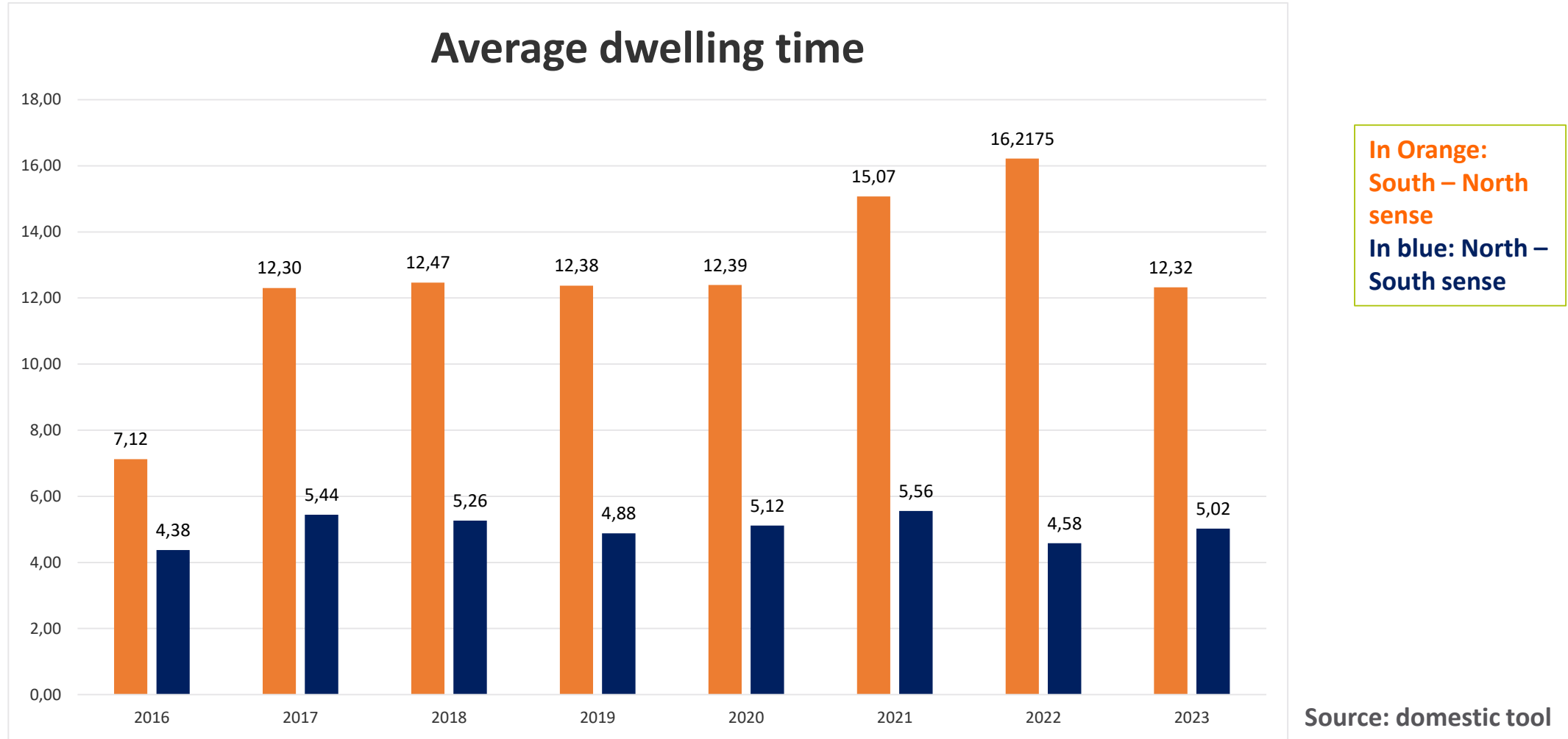
Daily average number of trains



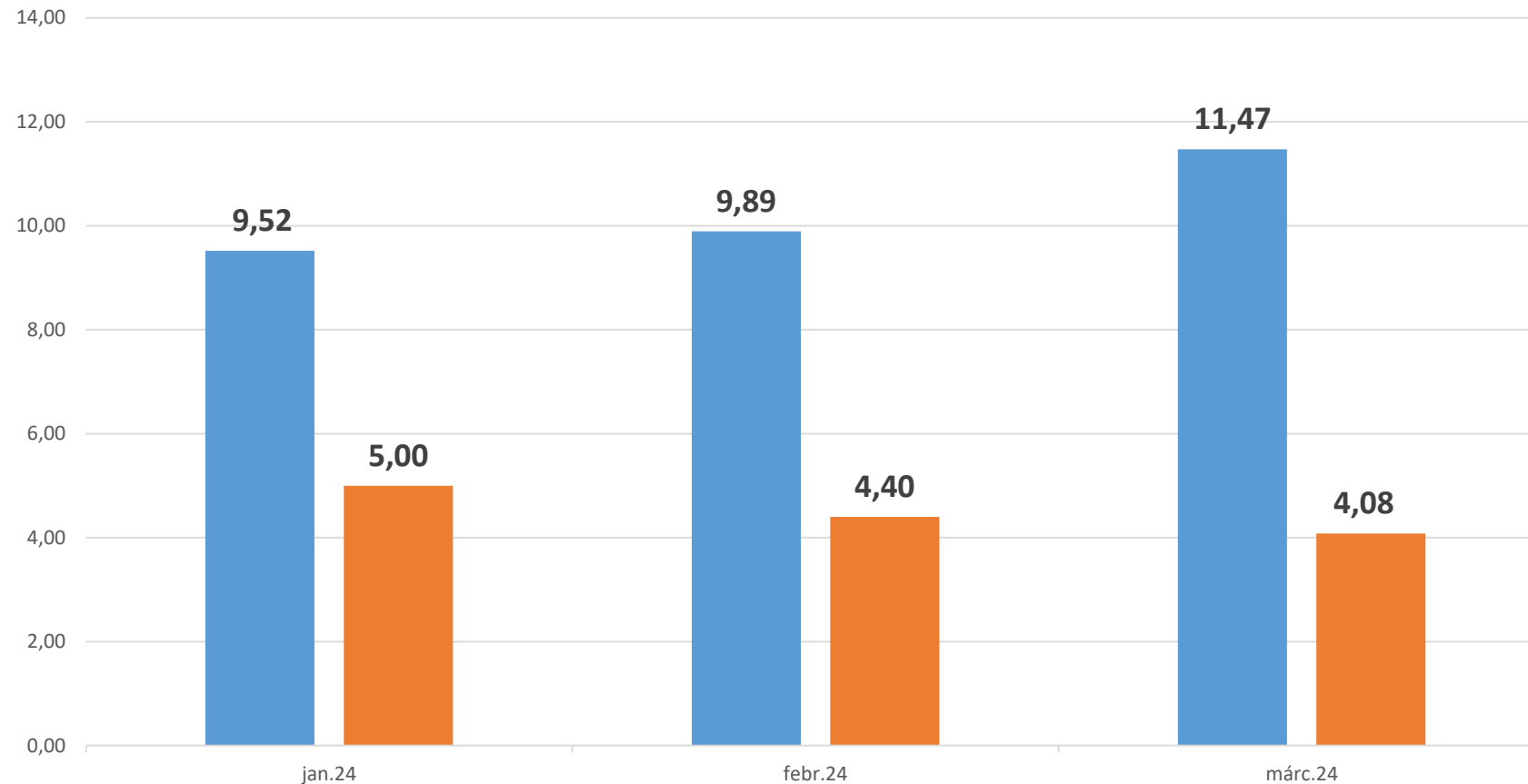
Source: domestic tool



Evolution of dwelling times



Evolution of dwelling times for the first 3 months in 2024



Source: domestic tool



Average dwelling time for ATTI Trains – 2024 March

	ATTI Trains number	Average dwelling time	Minimum dwelling time
East - West	133	4,57 h	43 min.
West - East	189	2,09 h	15 min.

Planned TCR in 2024



Curtici – Lökösháza, in MAV network:

- o 4 – 9 March 2024: night-time single track closures (20:00 - 4:50)
- o 18 – 22 March 2024: night-time single track closures (18:00 - 4:50)
- o 2 – 6 April 2024: night-time single track closures (20:00 - 4:50)
- o 2 – 18 May 2024: continuous single track closures
- o **24 May – 15 June 2024: continuous total track closures.**





DE – CZ – AT – SK – HU – RO – BG – EL

RFC7

Orient/East-Med

Thank you for your kind attention!



12
10:04



Co-financed by the European Union
Connecting Europe Facility