





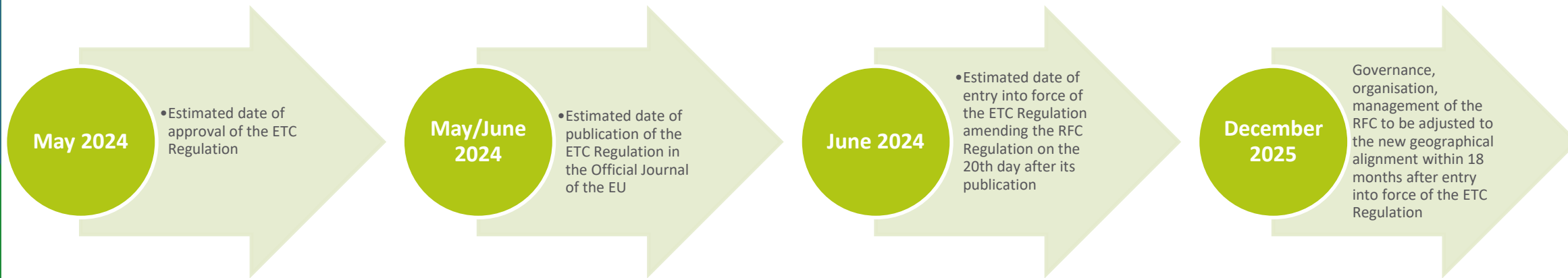
Rhine - Danube Corridor

Rail freight, ports and rail-road terminals (RRT)

BE BG CZ DK DE EE IE EL ES FR HR IT CY LV LT LU HU MT NL AT PL PT RO

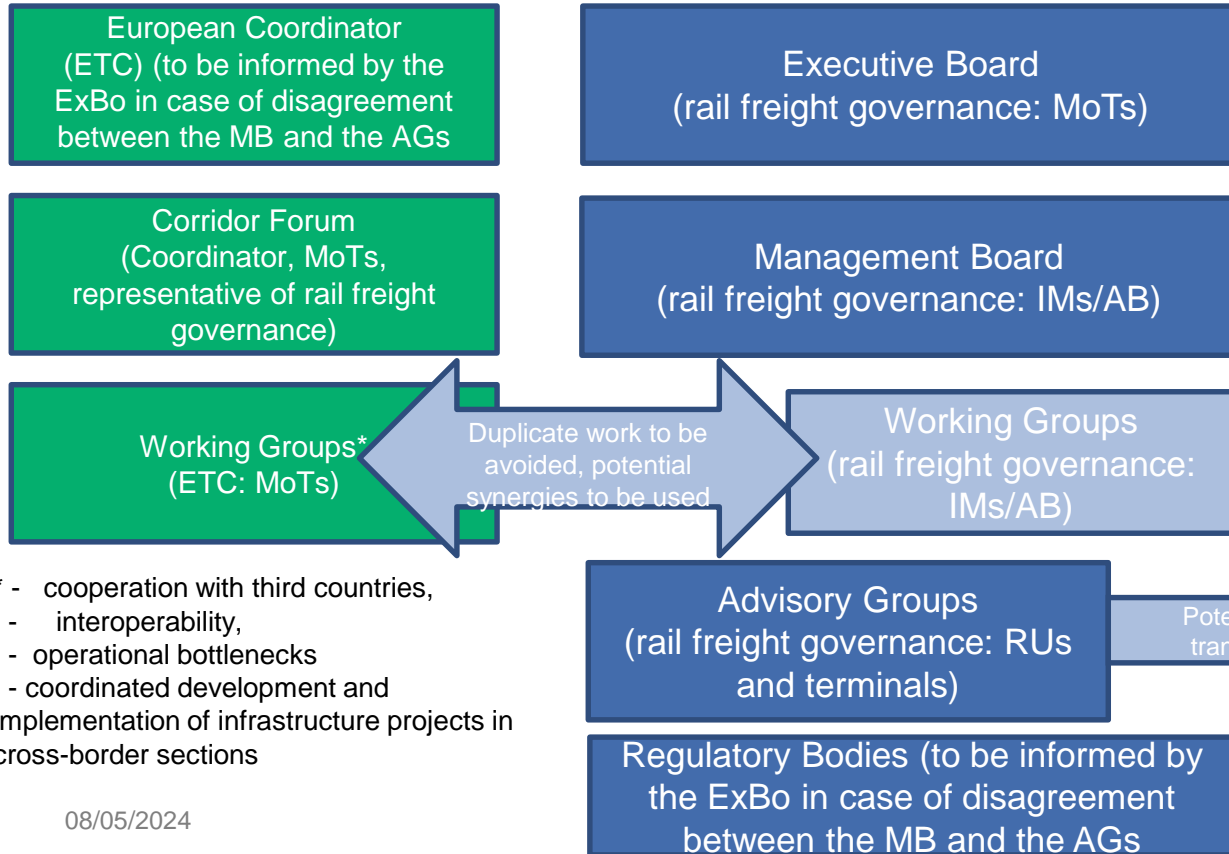


Current estimated timeline of legislative procedure and estimated implementation deadline of ETC Regulation



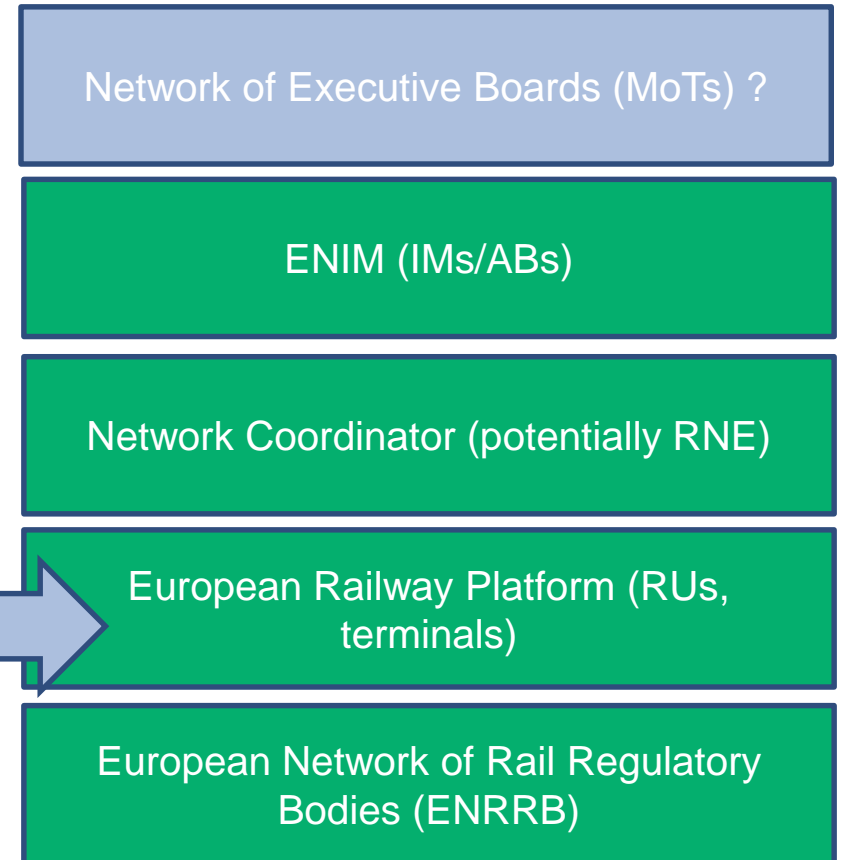
Stakeholders marked in green will remain existing after the repeal of the RFC Regulation in line with the ETC and the draft capacity regulations

Stakeholders defined in Art. 65 of ETC Regulation



* - cooperation with third countries,
 - interoperability,
 - operational bottlenecks
 - coordinated development and implementation of infrastructure projects in cross-border sections

Stakeholders defined in draft capacity regulation



Cooperation with the RAG/TAG

as envisaged in the ETC Regulation



01



Consultation on
infrastructure
development
and investment
needs



02

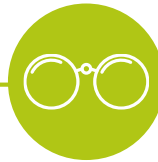


Gathering their
views and their
assessment of
performance/q
uality of service
on the freight
corridor



Cooperation with the RAG/TAG

beyond the scope of the ETC Regulation, in the transition period



What shall be our focus topics in the transition period?



Shall we arrange regional RAG/TAG meetings with other RFCs as next step?

If so, what geographical scope such regional RAG/TAG meetings shall be arranged for the members of the RAG and TAG of RFCs OEM and RD?

Proposal:
Czech-Slovak axis
potentially jointly with RFCs 5, 8, and 11